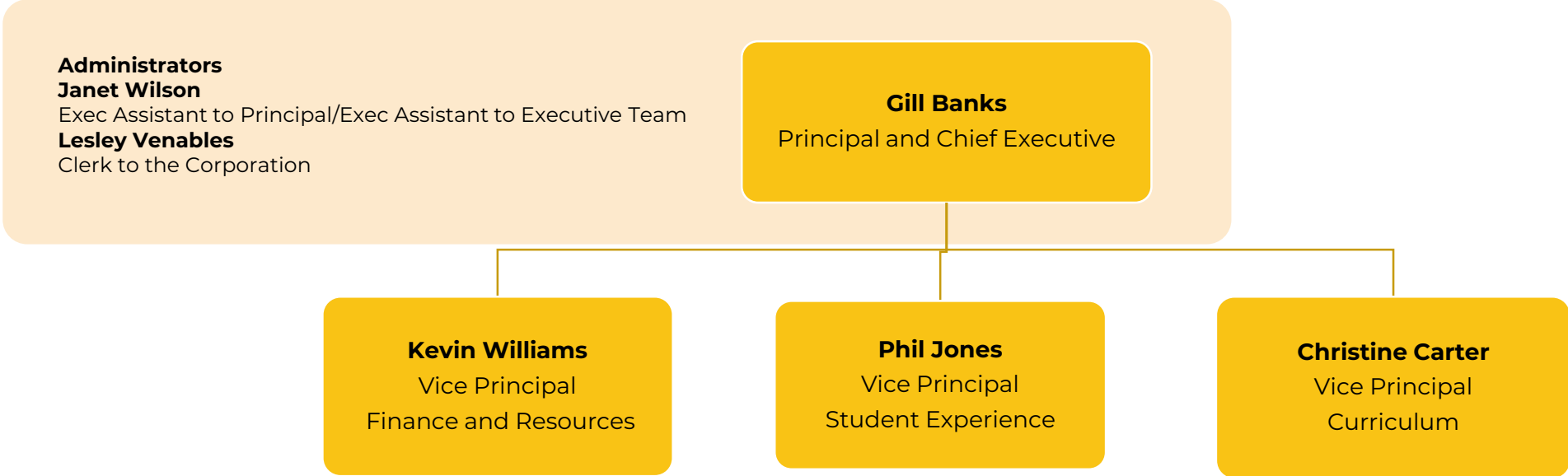
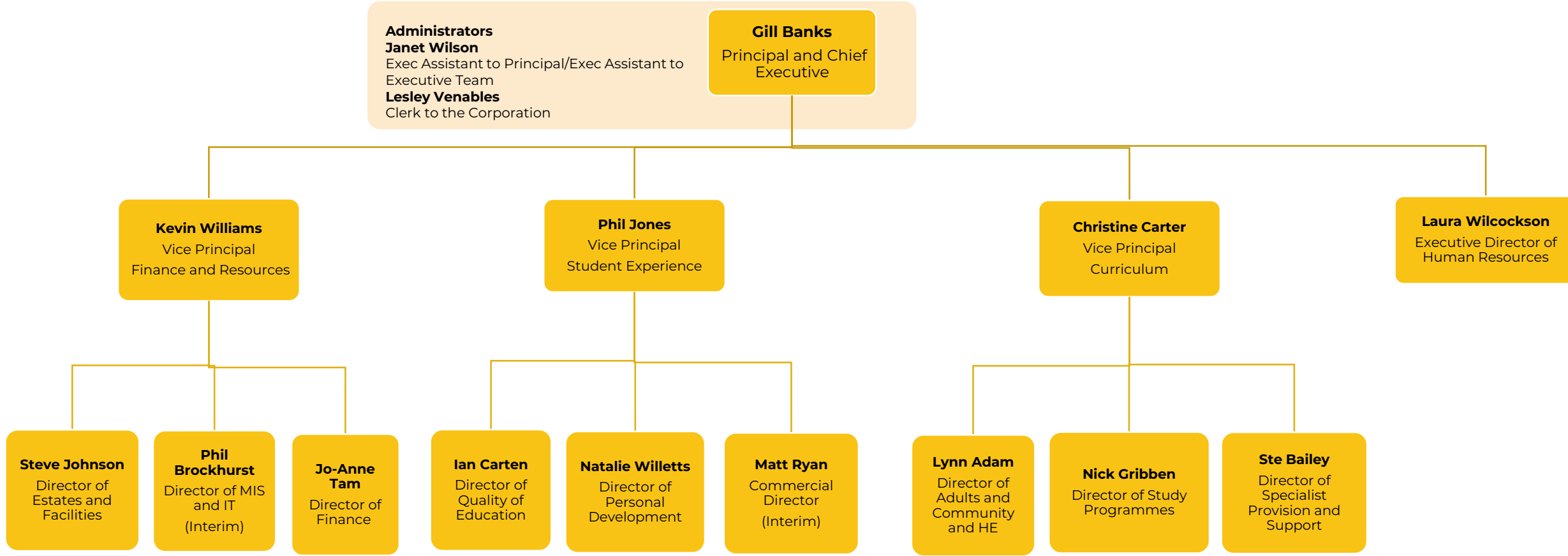


Organisation Structure

Executive Leadership Team



Senior Leadership Team



Administrators
Janet Wilson
 Exec Assistant to Principal/Exec Assistant to Executive Team
Lesley Venables
 Clerk to the Corporation

Gill Banks
 Principal and Chief Executive

Kevin Williams
 Vice Principal
 Finance and Resources

Phil Jones
 Vice Principal
 Student Experience

Christine Carter
 Vice Principal
 Curriculum

Laura Wilcockson
 Executive Director of
 Human Resources

Steve Johnson
 Director of
 Estates and
 Facilities

Phil Brockhurst
 Director of MIS
 and IT
 (Interim)

Jo-Anne Tam
 Director of
 Finance

Ian Carten
 Director of
 Quality of
 Education

Natalie Willetts
 Director of
 Personal
 Development

Matt Ryan
 Commercial
 Director
 (Interim)

Lynn Adam
 Director of
 Adults and
 Community
 and HE

Nick Gribben
 Director of Study
 Programmes

Ste Bailey
 Director of
 Specialist
 Provision and
 Support